

RAIN DROP Hat

This hat is made for early spring days, when the weather use to change several times a day. Its lace pattern is proper to give enough warmth and ventilation depending on the temperature outside



Materials

1 skein Eden Cottage Yarn Oakworth DK shade Whispering Grass (or every other yarn to obtain the gauge)

3 mm 80 cm long circular needles

4 mm 80 cm long circular needles

4 mm double pointed needles

1 stitch marker

Tapestry needle

Gauge

20 sts and 26 rows = 10x10 cm in stockinet st



Directions

With 3mm circular needle cast on 96 stitches and join for working in the round, placing marker at the beginning.

Ribbing

Round 1: *k1, p1* repeat to the end of round

Repeat round 1 15 times (approx.. 5 cm)

Body (see Chart A – Lace Pattern)

Round 1: switch to the 4 mm needles and work lace pattern according to the chart A. Repeat chart to the end of round (16 times)

Work round 1. to 8. 2 more times

Crown (see Chart B)

Change to the dpn when you prefer to do so.

Work rounds 1-24 accordig to the Chart B.

After your last crown row you 16 sts remain.



Finishing

Break yarn and draw through remaining stitches, pulling tightly. Sew the yarn to the inside of the hat securely. Block.

Take on and feel happy☺

Body(Written)

You should move the stitch marker in every round to have complete pattern and the start

- Round1.: * 1/2, 2/1* repeat to the end of the round, slm
- Round 2.: * k* repeat to the end of the round, slm
- Round 3.: * k* repeat to the end of the round, slm
- Round 4.: *k* repeat to the end of the round, slm
- Round 5.: * ssk,k2, k2tog,yo, yo * repeat to the end of the round, slm
- Round 6.: * k5, k1tbl* repeat to the end of the round, slm
- Round 7.: * k1tbl, yo, k2tog, ssk, yo, k1* repeat to the end of the round, slm
- Round 8.: * k* repeat to the end of the round, slm
- Round 9.: * k2, 1/1, k2* repeat to the end of the round, slm
- Round 10.: * k* repeat to the end of the round, slm

Crown (written)

You should move the stitch marker in every round to have complete pattern and the start

Change to the dpn when you prefer to do so.

- Round1.: * 1/2, 2/1* repeat to the end of the round, slm
- Round 2.: * k* repeat to the end of the round, slm
- Round 3.: * k* repeat to the end of the round, slm
- Round 4.: *k* repeat to the end of the round, slm
- Round 5.: * ssk,k2, k2tog,yo, yo * repeat to the end of the round, slm
- Round 6.: * k5, k1tbl* repeat to the end of the round, slm
- Round 7.: * k1tbl, yo, k2tog, ssk, yo, k1* repeat to the end of the round, slm
- Round 8.: * k* repeat to the end of the round, slm
- Round 9.: * k2, 1/1, k2* repeat to the end of the round, slm
- Round 10.: * k* repeat to the end of the round, slm
- Round 11.: * k2, 1/1, k4/ ssk* repeat to the end of the round, slm
- Round 12.: * k* repeat to the end of the round, slm
- Round 13.: * k9, ssk* repeat to the end of the round, slm
- Round 14.: * k* repeat to the end of the round, slm
- Round 15.: * k8, ssk* repeat to the end of the round, slm
- Round 16.: * k* repeat to the end of the round, slm
- Round 17.: * k7, ssk* repeat to the end of the round, slm
- Round 18.: * k* repeat to the end of the round, slm



Round 19.: * k6, ssk* repeat to the end of the round, slm
Round 20.: * k* repeat to the end of the round, slm
Round 21.: * k5, ssk* repeat to the end of the round, slm
Round 22.: * k* repeat to the end of the round, slm
Round 23.: * k4, ssk* repeat to the end of the round, slm
Round 24.: * k* repeat to the end of the round, slm
Round 25.: * k2, ssk* repeat to the end of the round, slm
Round 26.: * k* repeat to the end of the round, slm
Round 27.: * k1, ssk* repeat to the end of the round, slm
After the last crown round 16 st remain.

Finishing

Break yarn and draw through remaining stiches, pulling tightly. Sew the yarn to the inside of the hat securely. Block.

Take on and feel happy☺



CHART A - LACE PATTERN

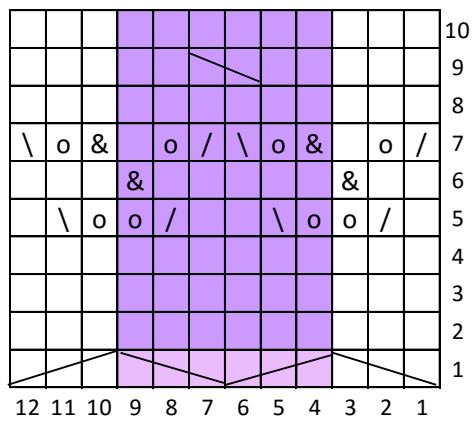
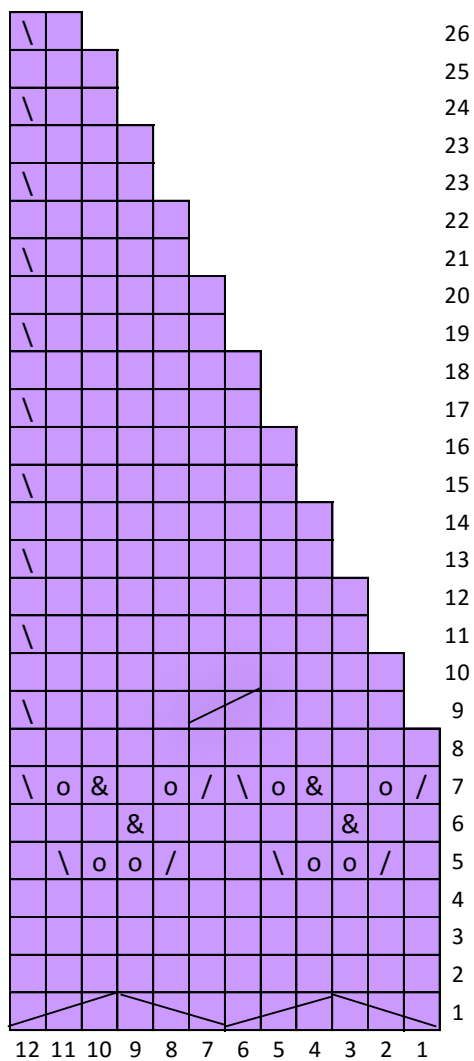
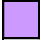









CHART B - CROWN



-  K KNIT
-  SSK slip 2 sts knitwise, insert point of LH needle through fronts of these 2 sts and k 2 tog
-  K2TOG Knit 2 sts together
-  M1 MAKE 1
-  KTBL KNIT THROUGH THE BACK LOOP
-  2/1 put 1st on the additional stick and leave in the **front** , k2, k1 from additional stick
-  1/2 put 2sts on the additional stick and hold to **back**, k1, k2 from additional stick
-  1/1 put 1st on the additional stick and hold to **back**, k1, k1 from additional stick



